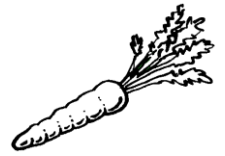
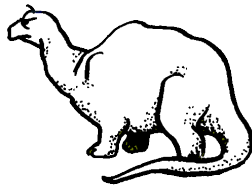
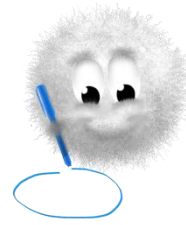
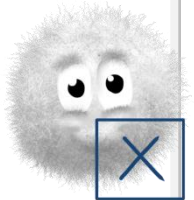


J'étudie le son [t] comme toupie

Entoure si tu entends le son [t]:

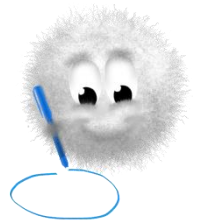


Coche la syllabe du son [t]:



Entoure les lettres du son [t]:

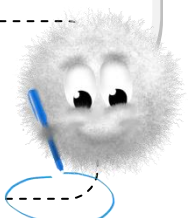
t l m d f T t D n c t T e l A t



Continue les lignes

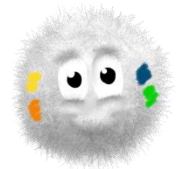


ti TA tu TI TU ta tu TA ti



5

Colorie les syllabes



pa ta ti



lu ti tu



ti mi ta



to tu ta

6

Complète avec ta, tar, ti, tu :

un        ssu



une        sse

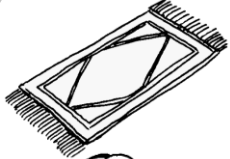
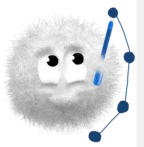
la voi        re



une        te

7

Relie les dessins aux mots correspondants



une tortue

un tapis

le tigre

une tulipe

une taupe