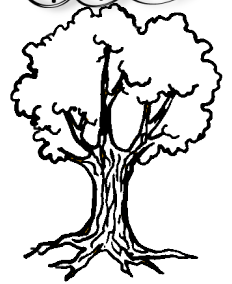
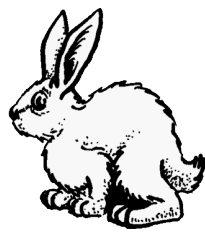




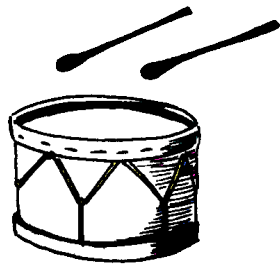
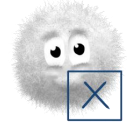
J'étudie le son [b] comme bébé



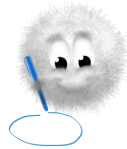
Entoure si tu entends le son [b]:



Coche la syllabe du son [b]:



Entoure les lettres du son [b]:



t o m o f C ss D E c t S R e ç A s



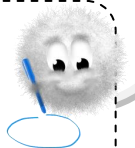
Continue les lignes

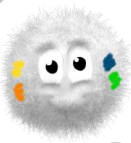


be

be br

bou ba bau bi be ba bo beau bou bi be





5

Colorie les syllabes



bo bou lou

pu

bu



bou



ba la bou

po bou ba

Complète avec ba, bou, bi, bo :



6

un hi



un lava

le teau



un ron

7

Relie les dessins aux mots correspondants



un arbre

un lavabo

une banane

un bureau

une table

