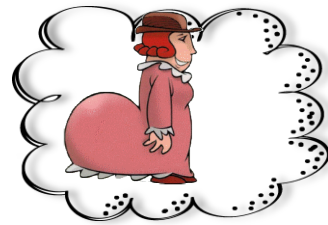
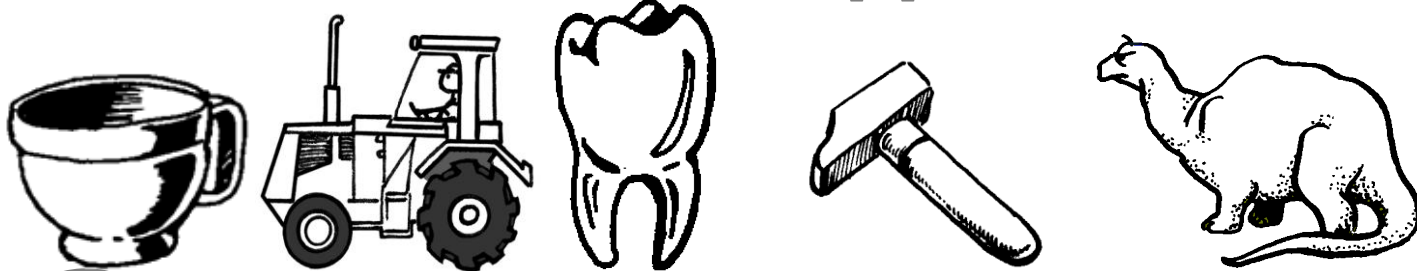


# J'étudie le son [d] comme domino



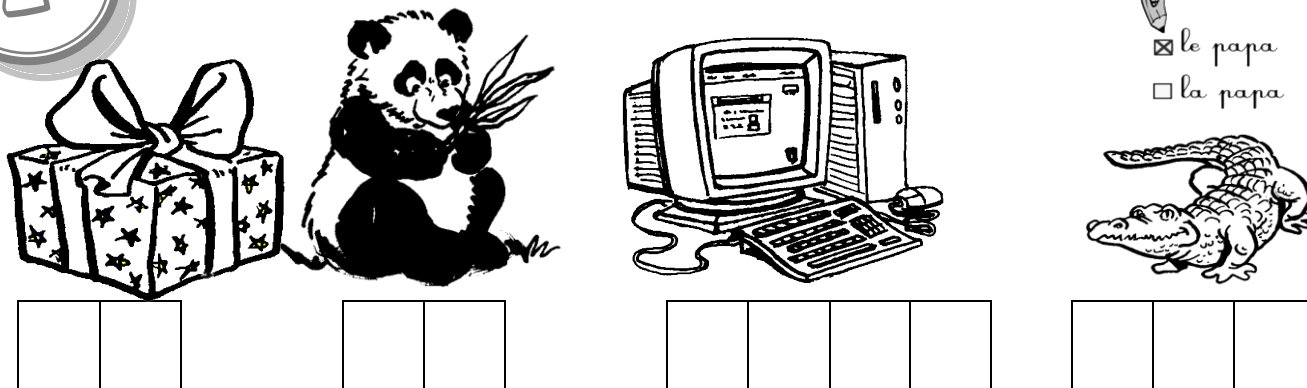
Entoure si tu entends le son [d]:



2

Coche la syllabe du son [d]:

Coche.  
 le papa  
 la papa



Entoure les lettres du son [d]:

D p P c q D c b B p t q r e d A d

Entoure.  
école

4

Continue les lignes

Ecris.  
école



Entoure.  
école

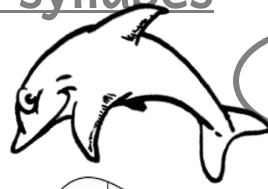
da du do da di dau di do du deau

5

Colorie les syllabes



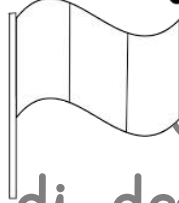
la da do



dau da di





da di do



dru pri dra

6

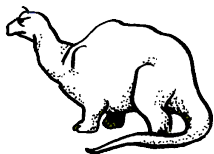
Complète avec dra, di, deau, du :

un ra  un pen  le

les ri  un  madaire

7

Relie les dessins aux mots correspondants



un dauphin  
des rideaux

un dinosaure

un radis

un panda

