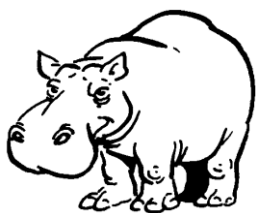
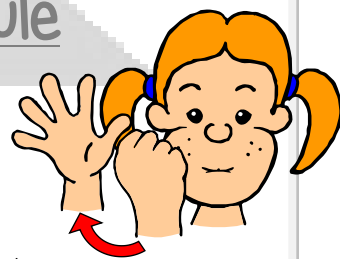




J'étudie le son [p] comme poule

1

Entoure si tu entends le son [p]:



2

Coche la syllabe du son [p]:



□ □

□ □

□ □ □

□ □ □

Entoure les lettres du son [p]:

h r P R b p e a r p r L q q l P



4

Continue les lignes

Ecris.



Handwriting practice lines. The first line shows a cursive 'p' followed by four dots on a baseline. The second line shows a cursive 'p' followed by four dots on a baseline.

5

Colorie les syllabes



pa

pi

po



pa

pu

po



pu

po

pi



po

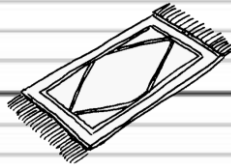
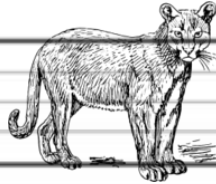
pu

pa

6

Complète avec pe, pu, pi, pa :

un _____ ma



un ta _____ s

le _____ no



un _____ nier

7

Relie les dessins aux mots correspondants



une plume

un palmier

le policier

le parapluie

un hippopotame

